



## Application Note 2

## ReFract - Energy Management Panel

The MusicWorks AcouPlex ReFract was originally designed as an energy absorption panel for CH Precision electronics. With the AC20 feet, or ReCo Conical feet the panel will locate in the energy management columns built into CH 1 series electronics. However with these feet, and the ReCap feet, a large number of high end electronics can benefit.

## Items Needed

1 x ReFract Panel

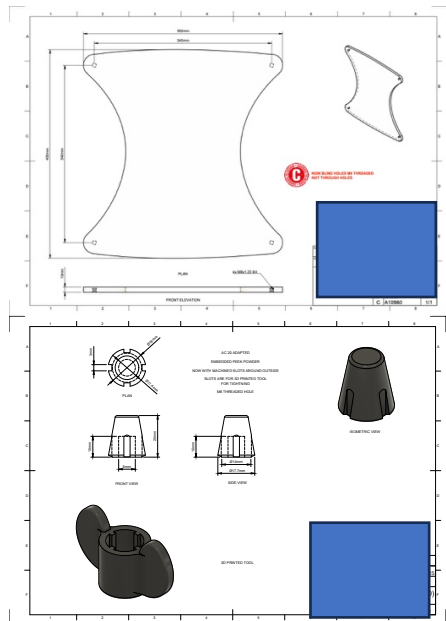
Optional footers:

4 x ReCap X feet, or 4 x AC20 feet, or 4 x ReCo Conical feet

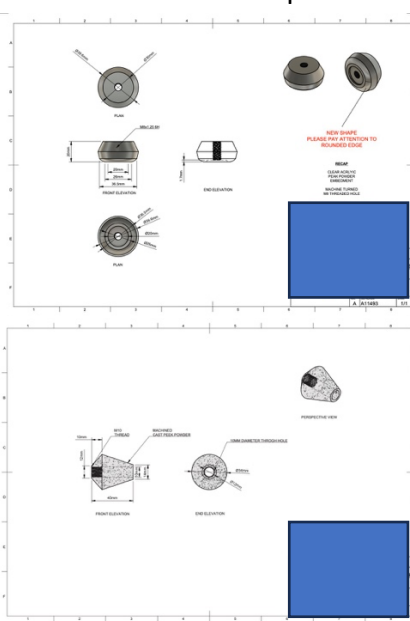
4 x 12mm x M8 PEEK studding

## Specifications

## ReFract Panel



## ReCap X Feet



## Photographs



14, Stockport Road Cheadle Manchester SK8 2AA [www.musicworks-hifi.com](http://www.musicworks-hifi.com)